



CATALOGUE NUMBER 6201.2

THE LABOUR FORCE, VICTORIA DECEMBER 1985

3 FEBRUARY 1986

INQUIRIES

Inquiries concerning these statistics may be made by telephoning Information Services (Labour force statistics) on Melbourne (03) 63 0181; for advice on the interpretation of these statistics ask for Mr Vince Lazzaro.

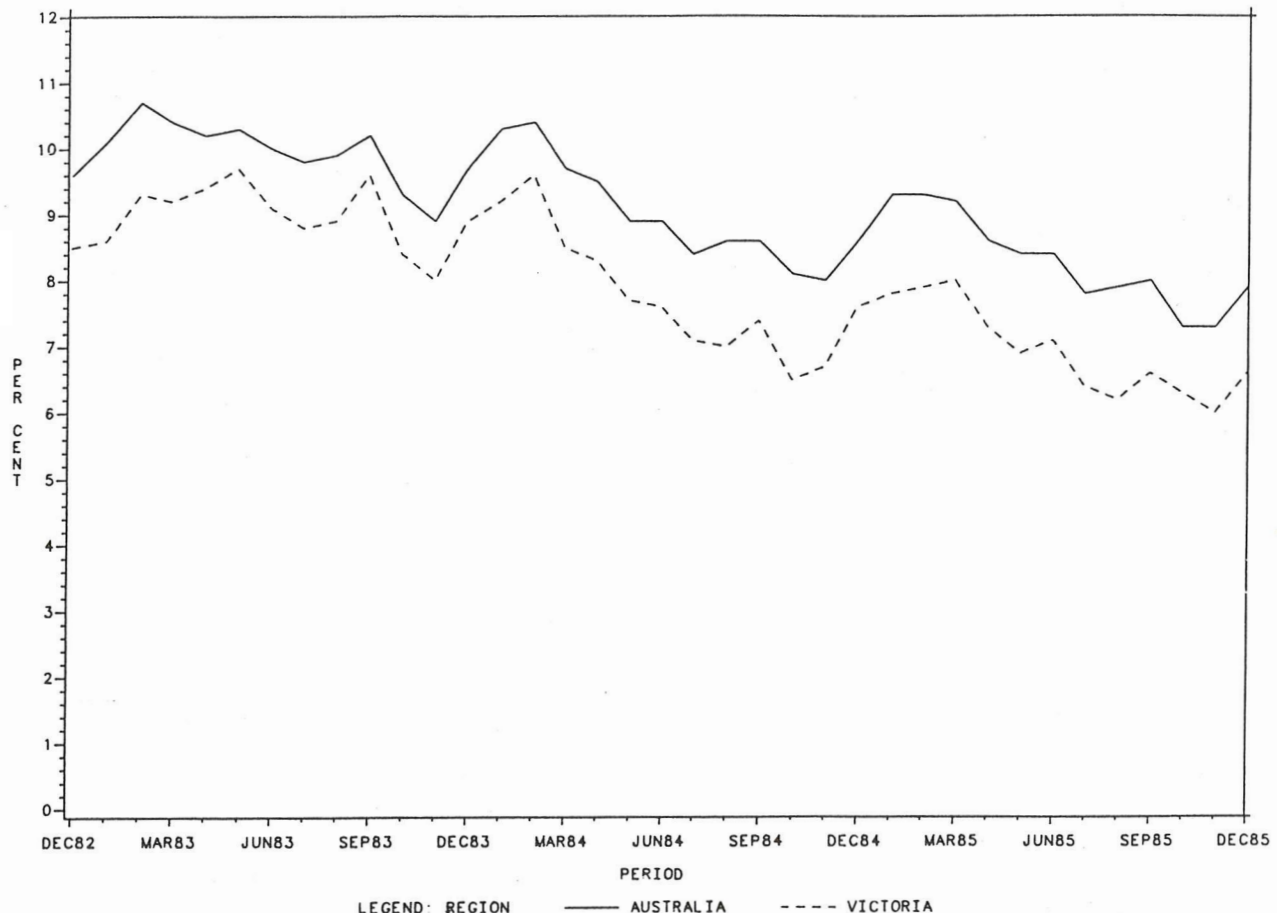
MAIN FEATURES

In December 1985 there were an estimated 1,971,900 persons in the labour force in Victoria of whom 1,841,200 were employed and 130,800 unemployed, compared with an estimated 1,209,400 persons aged 15 and over who were not in the labour force. The labour force participation rate was 62.0 per cent for persons, 75.9 per cent for males, and 48.6 per cent for females.

Victoria's unemployment rate was 6.6 per cent for December 1985. The unemployment rate for Australia for the same period was 7.9 per cent and for Victoria 12 months previously (December 1984) was 7.6 per cent. In December 1985 Victoria's unemployment rate was 5.8 per cent for males and 7.8 per cent for females.

The median duration of unemployment in Victoria for December 1985 was 13.0 weeks for persons, 13.0 weeks for males, and 8.0 weeks for females.

UNEMPLOYMENT RATES, VICTORIA AND AUSTRALIA



EXPLANATORY NOTES

Introduction

This publication contains Victorian labour force estimates derived from the Monthly Population Survey conducted throughout Australia by the Australian Bureau of Statistics. Labour force estimates for employed persons classified by industry and occupation are available quarterly (i.e. each February, May, August, and November) in The Labour Force, Victorian Regions (6202.2)

Conduct of the ABS Monthly Population Survey

2. The survey is based on a multi-stage area sample of private dwellings (houses, flats, etc.) and non-private dwellings (hotels, motels, etc.) and covers about one-half of one per cent of the Victorian population.

Scope of survey

3. All persons aged 15 years and over are included in the survey except:

- (a) members of the permanent defence forces;
- (b) certain diplomatic personnel of overseas governments;
- (c) overseas visitors holidaying in Australia; and
- (d) members of non-Australian defence forces (and their dependants) stationed in Australia.

Definitions

4. The labour force category to which a person is assigned depends on his or her actual activity (i.e. whether working, looking for work, etc.) during the survey week. The definitions conform closely to the standard definitions recommended by the International Labour Organisation.

Employed persons comprise all those aged 15 years and over who, during the survey week:

- (a) worked for one hour or more for pay, profit, commission, or payment in kind in a job or business, or on a farm (including employees, employers, and self-employed persons); or
- (b) worked for 15 hours or more without pay in a family business or on a farm (i.e. unpaid family helper); or
- (c) were employees who had a job but were not at work and were:
 - (i) on paid leave;
 - (ii) on leave without pay for less than four weeks up to the end of the survey week;
 - (iii) stood down without pay because of bad weather or plant breakdown at

their place of employment for less than four weeks, up to the end of the survey week;

- (iv) on strike or locked out;
- (v) on workers' compensation and expected to be returning to their job; or
- (vi) receiving wages or salary while undertaking full-time study; or
- (d) were employers or self-employed persons who had a job, business, or farm, but were not at work.

Unemployed persons are those aged 15 years and over who were not employed during the survey week and:

- (a) had actively looked for full-time or part-time work at any time in the four weeks up to the end of the survey week and were:
 - (i) available for work in the survey week, or would have been available except for temporary illness (i.e. lasting for less than four weeks); or
 - (ii) waiting to start a new job within four weeks from the end of the survey week and would have started in the survey week if the job had been available then; or
- (b) were waiting to be called back to a full-time or part-time job from which they had been stood down without pay for less than four weeks up to the end of the survey week (including the whole survey week) for reasons other than bad weather or plant breakdown.

The labour force comprises all persons who, during the survey week, were employed or unemployed, as defined above.

The unemployment rate is the number of unemployed in each group as a percentage of the labour force in the same group.

The participation rate is the labour force in each group as a percentage of the civilian population aged 15 years and over in the same group.

Full-time workers are those who usually work 35 hours a week or more and others who, although usually part-time workers, worked 35 hours or more during the survey week.

Part-time workers are those who usually work less than 35 hours a week and who did so during

the survey week. When recording hours of work, fractions of an hour are disregarded.

Persons not in the labour force are those who, during the survey week, were not in the categories 'employed' or 'unemployed'.

Marital status. In the labour force survey, persons are classified as married (including de facto) or not married. Marital status is determined from information supplied by the respondent about the individual himself or herself and, where the person was reported as being married, about the living arrangements of persons usually resident in the household.

A family is defined as consisting of two or more related persons usually resident in the same household at the time of the survey. A family can contain no more than two married persons and can contain two married persons only if these persons are husband and wife.

Hours of work. The figures of aggregate hours and average hours refer to actual hours worked during the survey week, not hours paid for.

Average (mean) duration of unemployment is the duration obtained by dividing the aggregate number of weeks a group has been unemployed by the number of persons in that group.

Median duration of unemployment is the duration which divides unemployed persons into two equal groups, one comprising persons whose duration of unemployment is above the median, and the other, persons whose duration is below it.

Revision of series

5. Survey estimates are not revised for the usually small amendments of population benchmarks arising from new data on deaths and overseas and internal migration. Revisions are made, however, after each Census of Population and Housing, and when population estimation bases are reviewed.

Reliability of estimates

6. Since the estimates in this publication are based on information obtained from occupants of a sample of dwellings they, and the movements derived from them, may differ from the figures that would have been produced if all dwellings had been included in the

survey. One measure of the likely difference is given by the standard error of an estimate. There are about two chances in three that a sample estimate will differ by less than one standard error from the figure that would have been obtained if all dwellings had been included in the survey, and about nineteen chances in twenty that the difference will be less than two standard errors. Standard errors of survey estimates and month to month movements are shown in Tables A and B at the end of this publication. An explanation of standard errors and their use can be found in Section 4.5 of Information Paper: Victorian Labour Force Statistics (6262.2).

Related publications

7. Users may also wish to refer to the following ABS publications, which are available on request:

The Labour Force, Australia, Preliminary
(6202.0) (monthly)

The Labour Force, Victorian Regions (6202.2)
(quarterly)

The Labour Force, Australia (6203.0) (monthly)

The Labour Force, Australia (6204.0) (annual)

Information Paper: Victorian Labour Force Statistics (6262.2)

8. Current publications produced by the ABS are listed in the Catalogue of Publications, Australia (1101.0) which is available free of charge from any ABS Office.

9. Other unpublished data from labour force surveys on aspects of the Victorian labour force are held by the Victorian Office of the ABS, and may be available on request.

Symbols and other usages

na not available

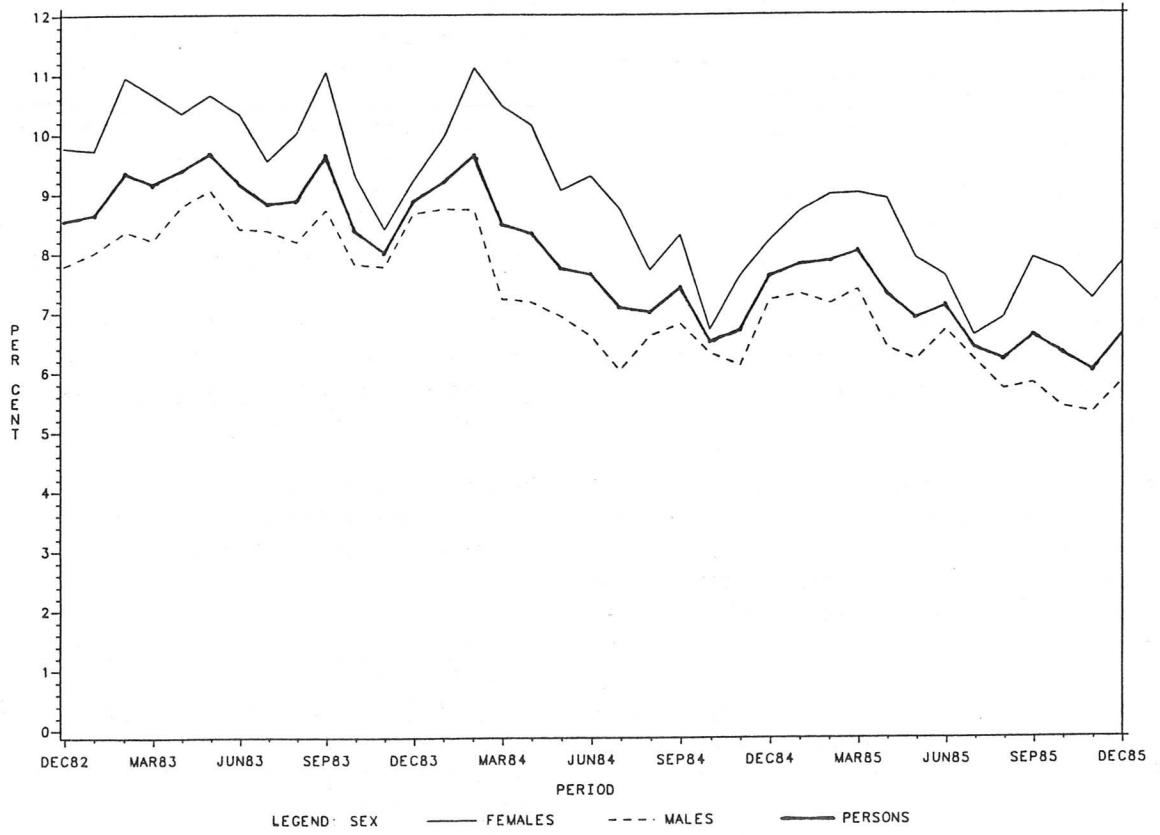
.. not applicable

* subject to sampling variability too high for most practical purposes

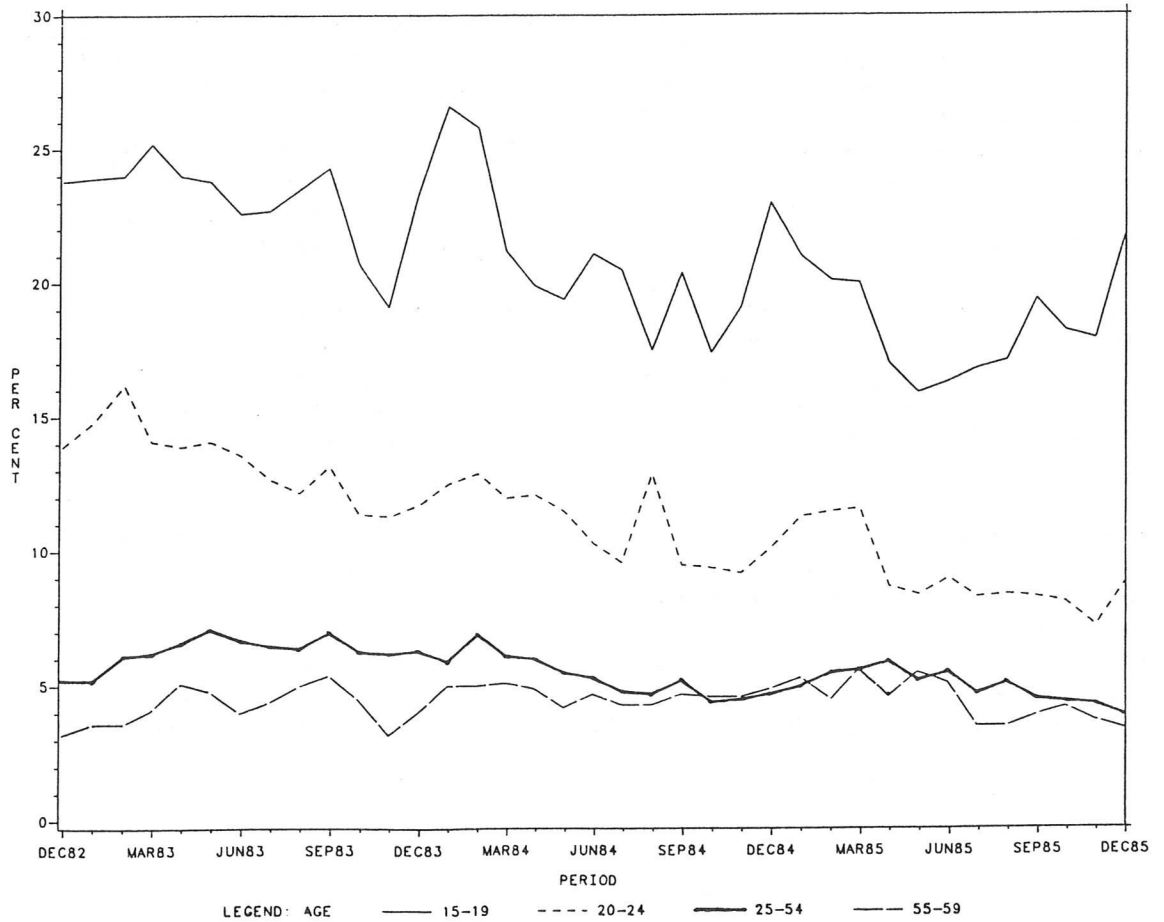
Where figures have been rounded, discrepancies may occur between sums of the component items and totals.

ERLE BOURKE
Deputy Commonwealth Statistician

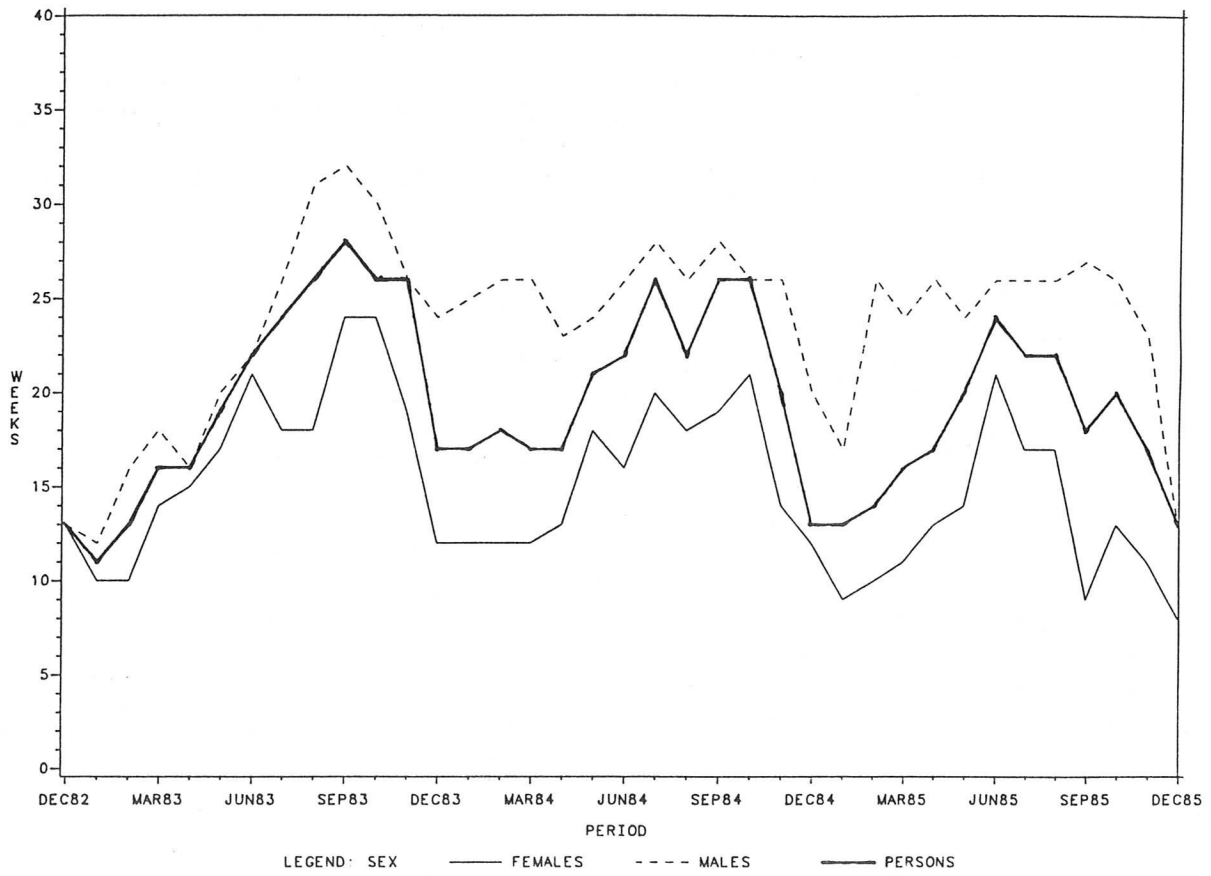
UNEMPLOYMENT RATES, BY SEX, VICTORIA



UNEMPLOYMENT RATES BY AGE, VICTORIA



MEDIAN DURATION OF UNEMPLOYMENT BY SEX, VICTORIA



MEDIAN DURATION OF UNEMPLOYMENT BY AGE, VICTORIA

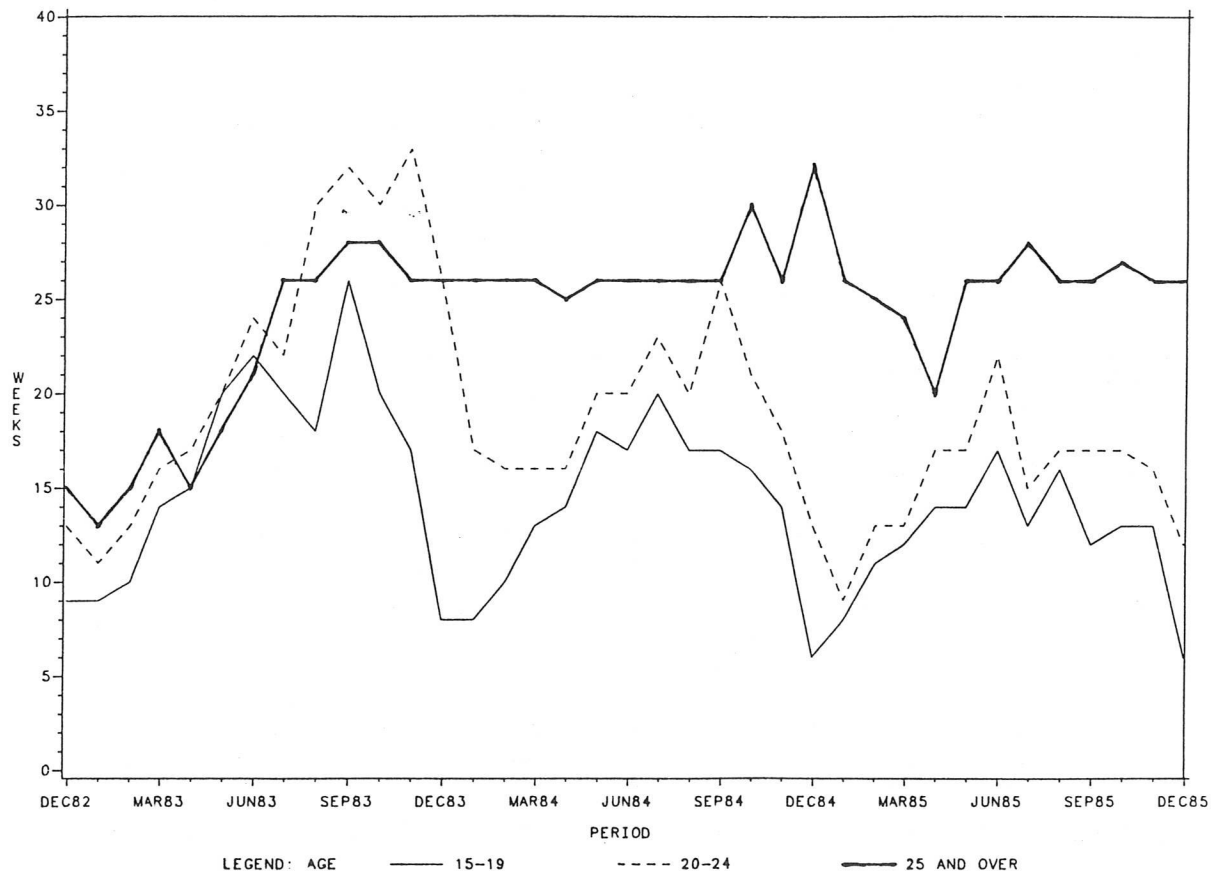


TABLE 1. CIVILIAN POPULATION AGED 15 YEARS AND OVER BY LABOUR FORCE STATUS, VICTORIA

Month	Employed		Unemployed looking for work			Labour force ('000)	Not in labour force ('000)	Civilian population 15 years and over ('000)	Unemploy- ment rate (per cent)	Partici- pation rate (per cent)
	Full- time ('000)	Total ('000)	Full- time ('000)	Part- time ('000)	Total ('000)					
MALES										
1984 - Oct.	1,010.5	1,077.1	64.5	7.9	72.5	1,149.6	377.6	1,527.1	6.3	75.3
Nov.	1,009.0	1,081.3	65.0	5.4	70.4	1,151.7	377.6	1,529.3	6.1	75.3
Dec.	1,027.6	1,092.6	71.5	13.4	84.9	1,177.5	354.0	1,531.6	7.2	76.9
1985 - Jan.	1,007.2	1,066.6	74.3	9.2	83.6	1,150.2	383.5	1,533.7	7.3	75.0
Feb.	1,020.2	1,081.1	76.0	7.2	83.2	1,164.2	371.3	1,535.6	7.1	75.8
Mar.	1,007.4	1,071.7	77.5	8.0	85.5	1,157.1	380.3	1,537.5	7.4	75.3
Apr.	1,002.3	1,073.4	64.1	8.9	73.0	1,146.4	393.1	1,539.5	6.4	74.5
May	1,007.8	1,078.4	62.4	9.3	71.7	1,150.1	391.5	1,541.6	6.2	74.6
June	1,004.9	1,074.1	71.6	5.4	77.0	1,151.1	392.6	1,543.8	6.7	74.6
July	1,021.2	1,087.9	66.9	5.4	72.4	1,160.2	385.7	1,545.9	6.2	75.0
Aug.	1,027.8	1,094.8	60.1	5.9	66.0	1,160.7	387.6	1,548.3	5.7	75.0
Sept.	1,034.4	1,107.4	59.4	8.6	68.0	1,175.4	375.3	1,550.7	5.8	75.8
Oct.	1,018.0	1,088.9	55.2	7.4	62.6	1,151.5	401.9	1,553.4	5.4	74.1
Nov.	1,042.2	1,109.6	54.4	7.8	62.2	1,171.8	384.1	1,555.8	5.3	75.3
Dec.	1,046.6	1,113.9	60.3	8.6	68.9	1,182.9	375.4	1,558.3	5.8	75.9
MARRIED FEMALES										
1984 - Oct.	223.9	408.6	11.6	8.0	19.6	428.2	527.0	955.2	4.6	44.8
Nov.	233.0	412.9	12.3	7.6	19.9	432.9	518.8	951.6	4.6	45.5
Dec.	235.2	412.9	11.2	9.1	20.3	433.2	522.9	956.1	4.7	45.3
1985 - Jan.	224.8	386.6	11.6	6.4	18.0	404.6	559.4	964.0	4.5	42.0
Feb.	228.3	407.5	15.1	11.3	26.4	433.9	535.2	969.1	6.1	44.8
Mar.	230.5	410.4	14.3	14.4	28.7	439.1	527.7	966.8	6.5	45.4
Apr.	219.3	398.7	14.9	15.2	30.1	428.8	530.7	959.5	7.0	44.7
May	221.9	409.1	11.1	14.7	25.8	434.9	524.3	959.2	5.9	45.3
June	220.5	411.1	12.3	11.4	23.7	434.9	519.1	954.0	5.5	45.6
July	223.2	418.8	8.3	10.2	18.6	437.3	520.6	958.0	4.2	45.6
Aug.	224.6	407.1	12.1	9.1	21.2	428.3	527.5	955.8	5.0	44.8
Sept.	233.3	419.2	11.5	12.7	24.2	443.4	519.7	963.1	5.5	46.0
Oct.	233.3	416.0	11.5	13.0	24.6	440.6	526.3	966.9	5.6	45.6
Nov.	230.8	429.2	11.1	9.7	20.8	450.0	515.0	965.1	4.6	46.6
Dec.	235.2	426.4	10.9	8.8	19.7	446.2	518.2	964.4	4.4	46.3
OTHER FEMALES										
1984 - Oct.	206.9	268.6	21.8	7.6	29.4	298.1	338.5	636.5	9.9	46.8
Nov.	204.9	266.1	27.7	7.9	35.6	301.7	340.7	642.4	11.8	47.0
Dec.	211.5	277.1	31.8	9.6	41.4	318.4	321.7	640.2	13.0	49.7
1985 - Jan.	205.8	264.1	36.0	8.1	44.1	308.1	326.2	634.3	14.3	48.6
Feb.	211.6	269.9	32.9	7.6	40.4	310.3	320.9	631.2	13.0	49.2
Mar.	209.5	275.1	29.7	9.4	39.1	314.2	321.4	635.6	12.4	49.4
Apr.	208.1	270.5	26.1	8.8	34.9	305.4	339.5	645.0	11.4	47.4
May	212.1	277.9	24.8	8.3	33.2	311.1	336.2	647.3	10.7	48.1
June	216.5	281.8	26.6	6.8	33.5	315.3	339.3	654.6	10.6	48.2
July	218.8	288.3	23.1	8.2	31.3	319.6	333.3	652.9	9.8	48.9
Aug.	215.4	283.9	22.9	7.1	30.0	313.9	343.6	657.5	9.6	47.7
Sept.	217.0	284.8	25.8	10.4	36.2	321.0	331.6	652.6	11.3	49.2
Oct.	211.7	282.1	25.5	8.5	34.0	316.1	335.1	651.2	10.7	48.5
Nov.	214.0	289.9	25.7	9.1	34.7	324.7	330.9	655.5	10.7	49.5
Dec.	226.4	300.8	31.9	10.2	42.1	342.9	315.8	658.7	12.3	52.1

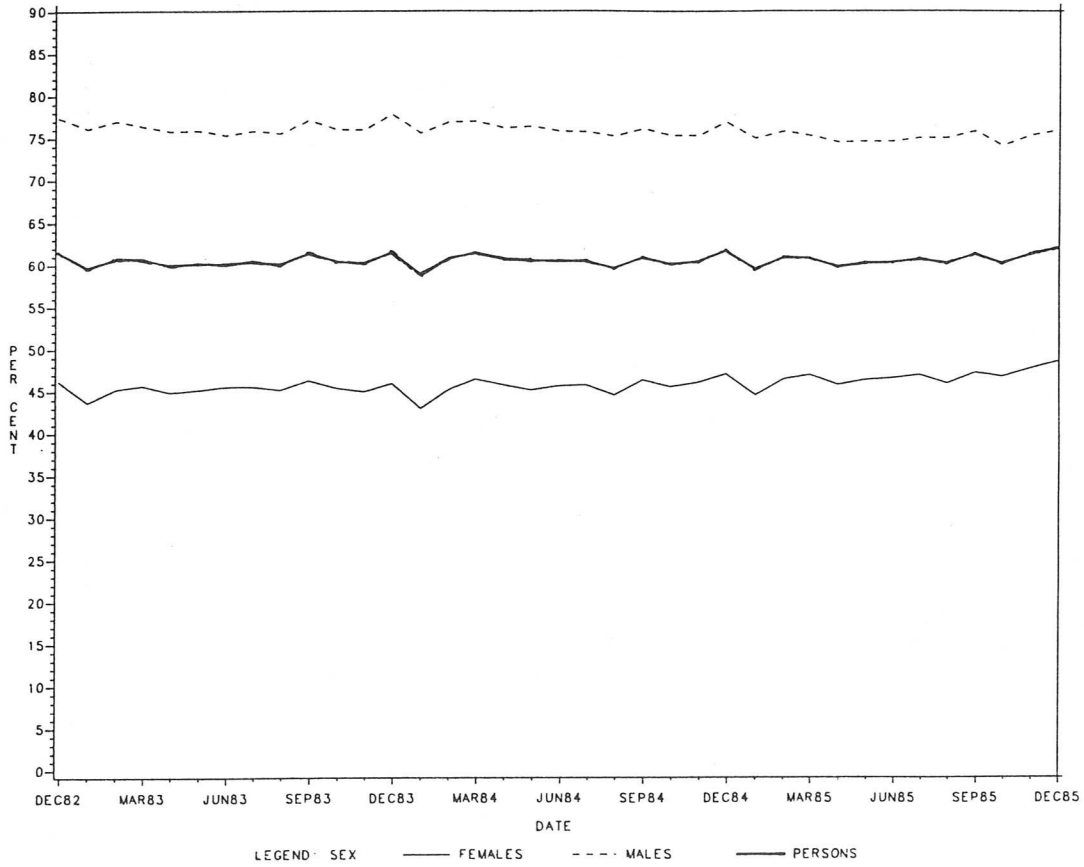
TABLE 1. CIVILIAN POPULATION AGED 15 YEARS AND OVER BY LABOUR FORCE STATUS, VICTORIA - continued

Month	Employed		Unemployed looking for work			Labour force ('000)	Not in labour force ('000)	Civilian 15 years and over ('000)	Unemploy- ment rate (per cent)	Partici- pation rate (per cent)
	Full- time ('000)	Total ('000)	Full- time ('000)	Part- time ('000)	Total ('000)					
	ALL FEMALES									
1984 - Oct.	430.8	677.3	33.4	15.6	49.0	726.3	865.5	1,591.7	6.7	45.6
Nov.	437.9	679.0	40.1	15.5	55.5	734.5	859.4	1,594.0	7.6	46.1
Dec.	446.7	689.9	43.0	18.7	61.7	751.6	844.6	1,596.2	8.2	47.1
1985 - Jan.	430.6	650.7	47.6	14.5	62.1	712.8	885.5	1,598.3	8.7	44.6
Feb.	439.9	677.4	48.0	18.9	66.8	744.2	856.1	1,600.3	9.0	46.5
Mar.	440.0	685.5	44.0	23.8	67.8	753.3	849.1	1,602.4	9.0	47.0
Apr.	427.4	669.2	41.0	24.0	65.0	734.2	870.2	1,604.4	8.9	45.8
May	434.0	687.0	36.0	23.0	59.0	746.0	860.5	1,606.5	7.9	46.4
June	437.0	693.0	38.9	18.2	57.2	750.2	858.4	1,608.6	7.6	46.6
July	442.0	707.1	31.4	18.4	49.8	756.9	854.0	1,611.0	6.6	47.0
Aug.	440.0	690.9	35.0	16.2	51.2	742.2	871.1	1,613.3	6.9	46.0
Sept.	450.2	704.0	37.2	23.1	60.4	764.4	851.3	1,615.7	7.9	47.3
Oct.	445.0	698.1	37.0	21.5	58.5	756.6	861.5	1,618.1	7.7	46.8
Nov.	444.7	719.1	36.8	18.8	55.6	774.7	845.9	1,620.6	7.2	47.8
Dec.	461.6	727.2	42.8	19.0	61.8	789.0	834.0	1,623.1	7.8	48.6
PERSONS										
1984 - Oct.	1,441.3	1,754.4	98.0	23.5	121.5	1,875.8	1,243.0	3,118.9	6.5	60.1
Nov.	1,446.9	1,760.3	105.1	20.9	126.0	1,886.3	1,237.0	3,123.3	6.7	60.4
Dec.	1,474.2	1,782.5	114.5	32.1	146.6	1,929.2	1,198.6	3,127.8	7.6	61.7
1985 - Jan.	1,437.9	1,717.3	122.0	23.7	145.7	1,863.0	1,269.0	3,132.0	7.8	59.5
Feb.	1,460.1	1,758.4	123.9	26.1	150.0	1,908.5	1,227.5	3,135.9	7.9	60.9
Mar.	1,447.4	1,757.2	121.4	31.8	153.3	1,910.4	1,229.4	3,139.8	8.0	60.8
Apr.	1,429.7	1,742.5	105.1	33.0	138.0	1,880.6	1,263.4	3,143.9	7.3	59.8
May	1,441.9	1,765.5	98.4	32.3	130.6	1,896.1	1,252.0	3,148.1	6.9	60.2
June	1,441.9	1,767.1	110.5	23.6	134.2	1,901.3	1,251.1	3,152.4	7.1	60.3
July	1,463.2	1,795.0	98.3	23.9	122.2	1,917.2	1,239.6	3,156.8	6.4	60.7
Aug.	1,467.8	1,785.7	95.1	22.1	117.2	1,902.9	1,258.7	3,161.6	6.2	60.2
Sept.	1,484.6	1,811.5	96.6	31.7	128.3	1,939.8	1,226.5	3,166.3	6.6	61.3
Oct.	1,463.1	1,787.0	92.2	28.9	121.1	1,908.1	1,263.4	3,171.5	6.3	60.2
Nov.	1,487.0	1,828.7	91.1	26.6	117.7	1,946.4	1,230.0	3,176.4	6.0	61.3
Dec.	1,508.2	1,841.2	103.1	27.7	130.8	1,971.9	1,209.4	3,181.4	6.6	62.0

TABLE 2. CIVILIAN POPULATION AGED 15 YEARS AND OVER BY LABOUR FORCE STATUS AND AGE, VICTORIA, DECEMBER 1985

Age group (years)	Males	Females		Total	Persons
		Married	Other		
LABOUR FORCE ('000)					
15-17	51.8	*	54.8	55.0	106.8
18-19	57.0	*	50.2	52.8	109.8
Total aged 15-19 years	108.8	*	105.0	107.8	216.6
20-24	161.3	42.5	98.6	141.1	302.3
25-34	314.7	136.6	69.7	206.3	521.0
35-44	271.3	150.9	30.1	181.0	452.3
45-54	189.0	83.5	22.8	106.4	295.4
55-59	82.0	21.1	9.6	30.7	112.7
60-64	40.4	6.2	*	9.5	49.9
65 and over	15.4	*	*	6.3	21.7
Total	1,182.9	446.2	342.9	789.0	1,971.9
NOT IN LABOUR FORCE ('000)					
15-17	58.8	*	51.8	51.8	110.7
18-19	12.6	*	12.7	14.6	27.2
Total aged 15-19 years	71.4	*	64.6	66.5	137.9
20-24	16.1	21.4	11.6	32.9	49.1
25-34	15.8	109.1	18.9	128.0	143.7
35-44	16.9	88.9	15.4	104.3	121.2
45-54	19.7	80.7	14.9	95.6	115.3
55-59	19.6	54.6	14.7	69.3	88.8
60-64	50.4	61.2	25.9	87.2	137.5
65 and over	165.6	100.5	149.8	250.3	415.9
Total	375.4	518.2	315.8	834.0	1,209.4
PARTICIPATION RATES (PER CENT)					
15-17	46.8	*	51.4	51.5	49.1
18-19	81.9	*	79.8	78.3	80.1
Total aged 15-19 years	60.4	*	61.9	61.9	61.1
20-24	90.9	66.5	89.5	81.1	86.0
25-34	95.2	55.6	78.6	61.7	78.4
35-44	94.1	62.9	66.1	63.4	78.9
45-54	90.6	50.9	60.5	52.7	71.9
55-59	80.7	27.9	39.5	30.7	55.9
60-64	44.5	9.2	*	9.9	26.6
65 and over	8.5	*	*	2.5	5.0
Total	75.9	46.3	52.1	48.6	62.0

PARTICIPATION RATES BY SEX, VICTORIA



PARTICIPATION RATES BY AGE, VICTORIA

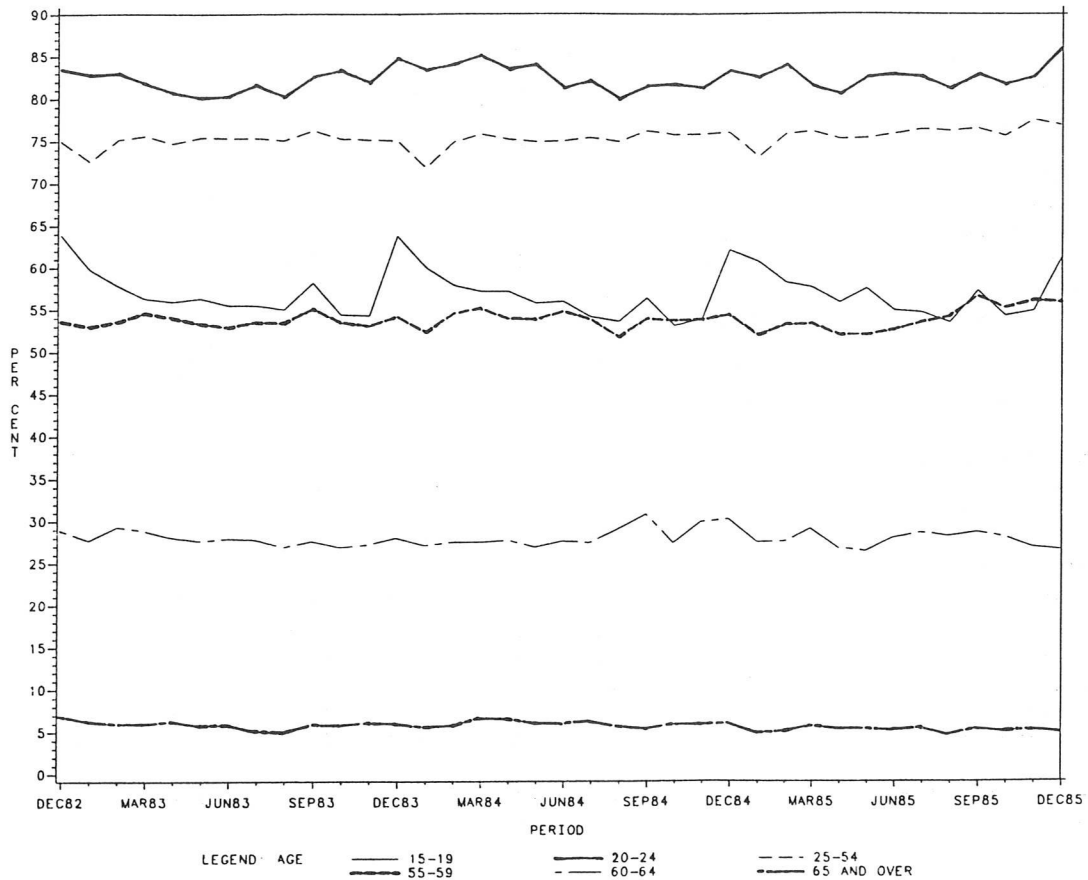


TABLE 3. CIVILIAN POPULATION AGED 15 YEARS AND OVER BY LABOUR FORCE STATUS, BIRTHPLACE, AND PERIOD OF ARRIVAL IN AUSTRALIA, VICTORIA, DECEMBER 1985

Birthplace particulars	Employed			Unempl- oyed ('000)	Labour force ('000)	Not in labour force ('000)	Unempl- oyment rate (per cent)	Partic- ipation rate(a) (per cent)
	Full-time ('000)	Part-time ('000)	Total ('000)					
MALES								
Born in Australia	740.0	51.9	791.9	48.7	840.6	256.1	5.8	76.6
Born outside Australia -								
Europe - Greece	25.9	*	26.5	*	28.5	8.0	*	78.0
Italy	39.1	*	41.0	*	42.5	16.1	*	72.6
U.K. and Ireland	93.2	4.2	97.4	*	101.2	27.6	*	78.5
Yugoslavia	20.0	*	20.9	*	22.0	7.2	*	75.4
Other Europe	59.7	*	62.8	*	66.3	26.3	*	71.6
Total Europe	237.9	10.7	248.6	11.8	260.4	85.2	4.5	75.3
New Zealand	11.8	*	11.8	*	12.3	*	*	87.5
Other countries	56.8	4.8	61.6	7.9	69.5	22.9	11.4	75.2
Main English-speaking countries (b)	111.9	4.4	116.3	4.5	120.8	30.7	3.7	79.7
Other	194.7	11.0	205.7	15.7	221.4	79.2	7.1	73.7
Period of arrival -								
Before 1961	106.2	5.6	111.9	5.6	117.5	58.6	4.8	66.7
1961 to 1965	40.3	*	42.1	*	44.8	12.1	*	78.8
1966 to 1970	61.7	*	63.9	4.7	68.6	12.8	6.8	84.3
1971 to 1975	32.7	*	34.6	*	37.0	10.5	*	77.9
1976 to 1980	32.1	*	33.8	*	34.7	8.6	*	80.0
1981 to survey date	33.5	*	35.7	*	39.7	7.3	*	84.5
Total overseas born	306.6	15.5	322.0	20.2	342.2	109.9	5.9	75.7
FEMALES								
Born in Australia	332.0	209.3	541.3	43.7	585.0	591.8	7.5	49.7
Born outside Australia -								
Europe - Greece	12.2	*	15.2	*	16.9	19.2	*	46.9
Italy	13.5	5.1	18.6	*	19.6	30.1	*	39.5
U.K. and Ireland	31.4	23.0	54.4	*	57.8	56.8	*	50.4
Yugoslavia	12.1	*	14.4	*	15.7	12.2	*	56.2
Other Europe	20.3	9.7	30.0	*	33.0	49.1	*	40.2
Total Europe	89.4	43.1	132.6	10.5	143.1	167.5	7.4	46.1
New Zealand	7.4	*	9.7	*	10.7	4.5	*	70.4
Other countries	32.8	10.9	43.7	6.5	50.1	47.6	12.9	51.3
Main English-speaking countries (b)	41.7	27.9	69.6	4.7	74.3	66.0	6.4	53.0
Other	87.8	28.5	116.3	13.4	129.7	153.7	10.3	45.8
Period of arrival -								
Before 1961	26.4	20.6	47.0	*	48.9	104.6	*	31.8
1961 to 1965	18.2	7.9	26.1	*	26.8	26.7	*	50.1
1966 to 1970	30.9	11.0	41.9	*	45.6	28.6	*	61.4
1971 to 1975	20.2	6.2	26.4	*	29.3	21.1	*	58.1
1976 to 1980	16.4	6.8	23.2	*	26.0	16.5	*	61.1
1981 to survey date	17.4	*	21.3	6.2	27.5	22.1	22.7	55.4
Total overseas born	129.6	56.3	185.9	18.1	204.0	219.7	8.9	48.2

TABLE 3. CIVILIAN POPULATION AGED 15 YEARS AND OVER BY LABOUR FORCE STATUS, BIRTHPLACE, AND PERIOD OF ARRIVAL IN AUSTRALIA, VICTORIA, DECEMBER 1985 - Continued

Birthplace particulars	Employed			Unempl- oyed ('000)	Labour force ('000)	Not in labour force ('000)	Unempl- oyment rate (per cent)	Partic- ipation rate(a) (per cent)
	Full-time ('000)	Part-time ('000)	Total ('000)					
PERSONS								
Born in Australia	1,072.1	261.2	1,333.3	92.4	1,425.7	847.9	6.5	62.7
Born outside Australia -								
Africa	12.6	*	15.6	*	17.6	11.5	*	60.4
America	12.7	*	15.2	*	16.1	6.9	*	69.9
Asia	62.7	9.4	72.2	10.8	83.0	50.4	13.0	62.2
Europe - Germany	20.1	*	23.6	*	25.4	11.4	*	69.1
Greece	38.1	*	41.7	*	45.4	27.2	*	62.5
Italy	52.6	7.0	59.6	*	62.1	46.2	*	57.4
Malta	10.5	*	11.6	*	12.2	8.9	*	58.0
Netherlands	13.1	*	15.2	*	16.6	10.9	*	60.4
Poland	8.0	*	9.9	*	11.1	13.0	*	45.9
U.K. and Ireland	124.6	27.2	151.8	7.3	159.1	84.5	4.6	65.3
Yugoslavia	32.0	*	35.2	*	37.7	19.4	*	66.0
Other Europe	28.2	4.3	32.5	*	34.0	31.3	*	52.1
Total Europe	327.3	53.8	381.2	22.4	403.6	252.7	5.5	61.5
New Zealand	19.2	*	21.5	*	23.0	6.3	*	78.6
Total Oceania	20.8	*	23.8	*	26.0	8.0	*	76.5
Main English-speaking countries (b)	153.6	32.3	185.9	9.3	195.2	96.7	4.7	66.9
Other	282.5	39.5	322.0	29.1	351.1	232.9	8.3	60.1
Period of arrival -								
Before 1961	132.7	26.2	158.9	7.5	166.4	163.3	4.5	50.5
1961 to 1965	58.6	9.7	68.2	*	71.6	38.7	*	64.9
1966 to 1970	92.6	13.3	105.8	8.4	114.2	41.4	7.3	73.4
1971 to 1975	52.9	8.1	61.0	5.2	66.3	31.6	7.9	67.7
1976 to 1980	48.5	8.5	57.0	*	60.7	25.2	*	70.7
1981 to survey date	50.9	6.0	57.0	10.2	67.2	29.4	15.2	69.5
Total overseas born	436.1	71.8	507.9	38.3	546.2	329.6	7.0	62.4

(a) Because it is not practicable to ascertain the birthplace of persons in institutions (who are classified as 'not in the labour force'), labour force participation rates for persons classified by birthplace are calculated by using population estimates which exclude those in institutions.
 (b) Comprises United Kingdom and Ireland, Canada, United States of America, South Africa, and New Zealand.

TABLE 4. CIVILIAN POPULATION AGED 15 YEARS AND OVER BY LABOUR FORCE STATUS AND FAMILY STATUS, VICTORIA, DECEMBER 1985

Family Status	Employed			Unem- ployed ('000)	Labour force ('000)	Not in labour force ('000)	Civilian popula- tion 15 years and over ('000)	Unempl- oyment rate (per cent)	Partic- ipation rate (per cent)
	Full- time ('000)	Part- time ('000)	Total ('000)						
Member of a family -									
Married -									
Husband -									
With children (a)	400.7	8.8	409.5	10.6	420.1	20.6	440.7	2.5	95.3
Without children (a)	287.4	18.1	305.5	9.2	314.7	183.9	498.7	2.9	63.1
Wife -									
With children (a)	92.7	120.4	213.1	13.6	226.8	201.7	428.5	6.0	52.9
Without children (a)	134.5	64.9	199.4	4.9	204.2	300.7	505.0	2.4	40.4
Not-married family head -									
Male -									
With children (a)	*	*	4.2	*	4.2	*	5.3	*	79.3
Without children (a)	9.7	*	9.9	*	10.4	4.6	15.0	*	69.3
Female -									
With children (a)	11.4	8.0	19.4	*	22.5	30.2	52.7	*	42.7
Without children (a)	14.3	5.0	19.3	*	20.2	41.1	61.3	*	32.9
Child of family head (b) -									
Males	170.1	28.5	198.6	32.6	231.2	85.3	316.6	14.1	73.0
Females	104.6	39.9	144.6	28.1	172.7	68.4	241.1	16.3	71.6
Other relative of family head -	19.7	*	21.3	*	23.6	35.7	59.4	*	39.8
Total	1,248.8	296.1	1,544.9	105.8	1,650.7	973.4	2,624.1	6.4	62.9
Not a member of a family -									
Living alone -									
Males	65.1	*	68.4	4.6	73.0	41.2	114.2	6.3	63.9
Females	33.7	10.8	44.4	*	45.6	107.8	153.4	*	29.7
Not living alone -									
Males	62.5	*	66.5	6.7	73.1	10.1	83.2	9.1	87.8
Females	46.5	7.0	53.4	5.7	59.2	9.1	68.3	9.7	86.7
Total	207.8	24.9	232.7	18.1	250.9	168.2	419.1	7.2	59.9
Not family coded	51.6	12.0	63.5	6.8	70.3	67.9	138.2	9.6	50.9
Total	1,508.2	333.0	1,841.2	130.8	1,971.9	1,209.4	3,181.4	6.6	62.0

(a) Aged 0-14 present in household. (b) Aged 15 and over.

TABLE 5. EMPLOYED PERSONS, FULL-TIME AND PART-TIME STATUS BY AGE AND MARITAL STATUS, VICTORIA,
DECEMBER 1985
('000)

Marital status	Age group (years)								Total
	15-19	20-24	25-34	35-44	45-54	55-59	60-64	65 and over	
EMPLOYED FULL-TIME									
Males -									
Married	*	21.7	200.2	228.7	153.1	64.3	27.7	8.6	704.9
Other	62.8	116.1	93.2	31.4	23.2	9.2	5.0	*	341.7
Total	63.5	137.8	293.3	260.1	176.3	73.5	32.7	9.3	1,046.6
Females -									
Married	*	30.7	74.2	71.3	43.4	9.8	*	*	235.2
Other	46.5	78.6	54.5	20.8	16.4	6.9	*	*	226.4
Total	47.9	109.3	128.7	92.1	59.8	16.7	4.6	*	461.6
Persons -									
Married	*	52.4	274.4	300.0	196.5	74.1	30.6	10.1	940.1
Other	109.3	194.7	147.6	52.2	39.6	16.1	6.8	*	568.1
Total	111.4	247.1	422.0	352.2	236.1	90.2	37.4	11.8	1,508.2
EMPLOYED PART-TIME									
Males -									
Married	*	*	4.3	*	4.8	5.5	*	5.0	27.7
Other	23.2	8.0	5.1	*	*	*	*	*	39.6
Total	23.2	8.6	9.3	4.4	6.3	5.5	4.4	5.7	67.4
Females -									
Married	*	8.7	55.8	72.1	38.8	10.9	*	*	191.2
Other	34.6	11.4	9.3	6.8	5.8	*	*	*	74.4
Total	35.0	20.1	65.1	78.8	44.6	13.1	4.9	*	265.6
Persons -									
Married	*	9.3	60.1	75.7	43.6	16.5	7.3	6.1	219.0
Other	57.8	19.4	14.4	7.5	7.4	*	*	*	114.0
Total	58.3	28.7	74.5	83.2	51.0	18.7	9.3	9.5	333.0
TOTAL EMPLOYED									
Males -									
Married	*	22.2	204.4	232.4	157.8	69.9	31.6	13.7	732.7
Other	86.0	124.2	98.2	32.1	24.8	9.2	5.5	*	381.3
Total	86.7	146.4	302.7	264.5	182.6	79.0	37.1	14.9	1,113.9
Females -									
Married	*	39.4	130.0	143.4	82.2	20.7	6.2	*	426.4
Other	81.0	90.0	63.8	27.6	22.2	9.1	*	*	300.8
Total	82.9	129.4	193.8	170.9	104.4	29.8	9.5	6.3	727.2
Persons -									
Married	*	61.6	334.4	375.7	240.1	90.5	37.9	16.2	1,159.1
Other	167.0	214.2	162.1	59.7	47.0	18.3	8.8	5.1	682.1
Total	169.7	275.8	496.5	435.4	287.1	108.8	46.7	21.2	1,841.2

TABLE 6. EMPLOYED PERSONS BY HOURS WORKED, VICTORIA, DECEMBER 1985

Weekly hours worked	Number employed ('000)					Percentage distribution				
	Females					Females				
	Males	Married	Other	Total	Persons	Males	Married	Other	Total	Persons
0(a)	49.3	19.4	13.3	32.7	82.0	4.4	4.5	4.4	4.5	4.5
1-15	34.6	83.9	39.6	123.4	158.0	3.1	19.7	13.1	17.0	8.6
16-29	50.3	86.3	30.4	116.7	167.0	4.5	20.2	10.1	16.1	9.1
30-34	79.8	39.2	21.7	60.9	140.7	7.2	9.2	7.2	8.4	7.6
35-39	208.9	78.6	76.8	155.4	364.3	18.8	18.4	25.5	21.4	19.8
40	226.7	59.1	65.7	124.9	361.6	21.3	13.9	21.8	17.2	19.6
41-44	76.8	12.9	16.8	29.8	106.6	6.9	3.0	5.6	4.1	5.8
45-48	113.3	15.5	15.5	31.0	144.3	10.2	3.6	5.2	4.3	7.8
49-59	127.6	12.4	12.4	24.7	152.3	11.5	2.9	4.1	3.4	8.3
60 and over	136.6	19.1	8.5	27.6	164.2	12.3	4.5	2.8	3.8	8.9
Total	1,113.9	426.4	300.8	727.2	1,841.2	100.0	100.0	100.0	100.0	100.0

AVERAGE WEEKLY HOURS WORKED (b)

Full-time workers	43.0	40.0	38.8	39.4	41.9
Part-time workers	16.6	15.9	14.6	15.5	15.8
All employed persons	41.4	29.2	32.9	30.7	37.2

(a) Persons who had a job from which they were absent for the whole of the survey week. Excludes persons laid off without pay for the whole of the survey week, who are classified as unemployed.
 (b) For information regarding the calculation of standard errors, refer to Information Paper: Victorian Labour Force Statistics (6262.2), Section 4.5.

TABLE 7. UNEMPLOYED PERSONS BY AGE AND WHETHER LOOKING FOR FULL-TIME OR PART-TIME WORK, VICTORIA, DECEMBER 1985

Particulars	Number ('000)			Unemployment rate (per cent)		
	Males	Females	Persons	Males	Females	Persons
15-19 - 15-17	13.2	14.0	27.2	25.5	25.5	25.5
18-19	8.8	10.9	19.7	15.5	20.6	17.9
Looking for first job	13.1	15.9	29.0
Not looking for first job	9.0	9.0	17.9
Attending school	7.6	7.9	15.5	29.4	25.1	27.1
Not attending school -						
Left before 1984	6.0	4.8	10.8	16.8	15.7	16.3
Left from 1984 to survey date	8.5	12.1	20.6	17.9	26.6	22.2
Total aged 15-19 years	22.0	24.9	46.9	20.3	23.1	21.7
20-24	14.9	11.6	26.5	9.2	8.3	8.8
25-34	12.1	12.5	24.6	3.8	6.1	4.7
35-44	6.9	10.0	16.9	2.5	5.5	3.7
45-54	6.4	*	8.4	3.4	*	2.8
55 and over	6.6	*	7.5	4.8	*	4.1
Looking for - Full-time work	60.3	42.8	103.1	5.4	8.5	6.4
- Part-time work	8.6	19.0	27.7	11.4	6.7	7.7
Total unemployed	68.9	61.8	130.8	5.8	7.8	6.6

TABLE 8. UNEMPLOYED PERSONS BY DURATION OF UNEMPLOYMENT (a), VICTORIA, DECEMBER 1985

	Number ('000)			Percentage distribution		
	Males	Females	Persons	Males	Females	Persons
Duration of unemployment (weeks) -						
Under 2	5.4	11.0	16.5	7.9	17.8	12.6
2 and under 4	7.6	8.3	15.9	11.0	13.4	12.2
4 and under 8	11.3	8.5	19.8	16.5	13.7	15.2
8 and under 13	6.3	5.6	11.9	9.1	9.1	9.1
13 and under 26	10.9	10.3	21.2	15.8	16.7	16.2
26 and under 52	7.3	6.8	14.1	10.5	11.0	10.8
52 and under 104	7.1	5.4	12.5	10.4	8.7	9.6
104 and over	13.0	5.9	18.8	18.8	9.5	14.4
Age (years) -						
15-19 -						
Under 13 weeks	14.1	15.1	29.2	20.4	24.4	22.3
13 weeks and under 52	5.2	7.3	12.5	7.6	11.8	9.6
52 weeks and over	*	*	5.2	*	*	4.0
Total	22.0	24.9	46.9	32.0	40.2	35.9
20-24 -						
Under 13 weeks	8.1	5.9	14.0	11.7	9.5	10.7
13 weeks and under 52	5.0	*	8.9	7.3	*	6.8
52 weeks and over	*	*	*	*	*	*
Total	14.9	11.6	26.5	21.6	18.8	20.3
25 and over -						
Under 13 weeks	8.5	12.5	21.0	12.3	20.2	16.1
13 weeks and under 52	7.9	6.0	13.9	11.4	9.7	10.6
52 weeks and over	15.6	6.8	22.4	22.6	11.0	17.2
Total	32.0	25.3	57.3	46.4	41.0	43.8
Total	68.9	61.8	130.8	100.0	100.0	100.0
DURATION OF UNEMPLOYMENT (WEEKS)						
Average (mean) duration -						
Aged 15-19 years	20.7	16.5	18.4
Aged 20-24 years	28.2	30.8	29.3
Aged 25 years and over	72.1	41.7	58.7
All ages	46.1	29.5	38.3
Median duration (b) -						
Aged 15-19 years	6.0	4.0	6.0
Aged 20-24 years	12.0	*	12.0
Aged 25 years and over	48.0	13.0	26.0
All ages	13.0	8.0	13.0

(a) Period from the time a person began looking for work, or was laid off to the end of the survey week. Periods of unemployment are recorded in complete weeks resulting in a slight understatement of duration of unemployment. (b) For information regarding the calculation of standard errors, refer to Information Paper: Victorian Labour Force Statistics (6262.2), Section 4.5

